



Lysander Way, Moreton-In-Marsh, GL56 0GF

**SHELDON
BOSLEY
KNIGHT**

LAND AND
PROPERTY
PROFESSIONALS

Property Description

This charming double-fronted Cotswold stone semi-detached home features three bedrooms and boasts a pretty walled garden, a garage, and a driveway. It is ideally located within easy reach of the train station and the town centre.

Upon entering, you are greeted by an entrance hall that leads to a downstairs WC and a useful understairs cupboard. There is an inviting double-aspect sitting room to one side, while on the other side of the house, the well-equipped kitchen and dining room feature double doors that open out to the garden and 2 further windows allowing lots of natural light in. The kitchen includes a good range of units including a built-in fridge freezer and an electric oven and hob.

On the upper level, the main bedroom comes with built-in wardrobes and an ensuite shower room. There are also two additional bedrooms and a family bathroom that includes a shower over the bath.

At the rear of the home, the partially walled garden is designed with patio and gravel areas, featuring some mature trees and shrubs. A gate at the end of the garden provides access to the garage, which has a driveway in front.





Key Features

- Double Fronted Cotswold Stone House
- Main Bedroom with En-suite Shower Room
- Popular Cotswold Market Town
- Double Aspect Sitting Room
- Kitchen Dining Room with Double Doors to Garden
- Three Bedrooms
- Garage and Driveway Parking for 2 Cars
- Partially Walled Garden
- Town Centre with Mainline Rail to Oxford/London
- Chipping Campden School Catchment Area

Price Guide
£375,000

EPC Rating - C

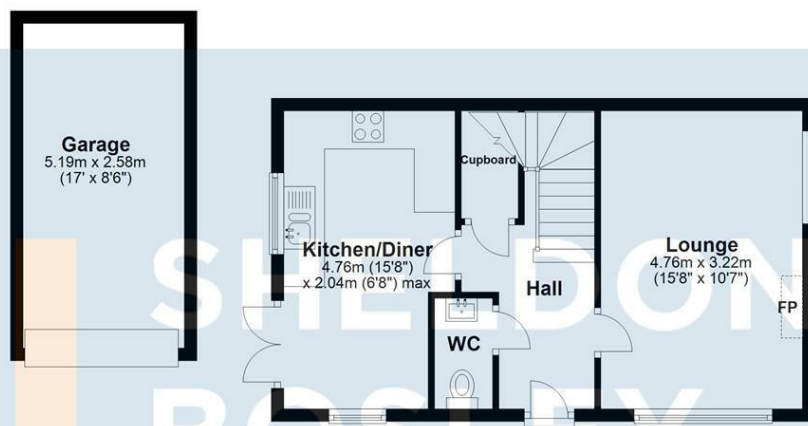
Tenure - Freehold

Council Tax Band - D

Local Authority -
Cotswold District

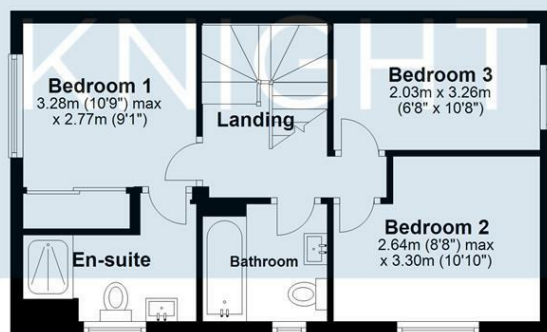
Ground Floor

Approx. 53.0 sq. metres (570.6 sq. feet)



First Floor

Approx. 39.3 sq. metres (423.0 sq. feet)



Total area: approx. 92.3 sq. metres (993.6 sq. feet)

All efforts have been made to ensure that the measurements on this floorplan are accurate however these are for guidance purposes only.
Plan produced using PlanUp.

We routinely refer clients to both our recommended Legal Firm and a panel of Financial Services Providers. It is your decision whether you choose to deal with these companies. In making that decision, you should know that we receive a referral fee